

# Tank Equipment



“AWH Connect DIN 11864-2 groove-flange connection – An aseptic process connection”



### The aseptic AWH Connect DIN 11864-2 connection for containers

The AWH-Connect flange connection is an **aseptic and hygienic connection** for containers. It was developed for the strict requirements of the pharmaceutical and biotechnological industry as well as the food industry.

The AWH block flange, which is welded into the container, is designed in accordance with the DIN 11864-2 flange version. Pressure and temperature specifications comply with the requirements of the **DIN 11864-2 standard**. This ensures high compressive strength while complying with aseptic requirements.

In terms of hygiene and sterility, the connection meets the requirements of **ASME-BPE, EHEDG** and the **3-A** guidelines.



Furthermore, this connection provides the **platform for a wide variety of sensors, sight glasses and light fittings available on the market**. However, the block flange can also be used **as a pipe connection** for inlets, outlets, aeration and ventilation lines on the tank.

### Good Reasons

- Simple, reliable CIP/SIP of containers
- Improved operator safety
- 100% traceability
- Complies with ASME-BPE requirements
- Draft approved as per PED 2014/68/EU by TÜV Nord in accordance with AD 2000 data sheet and EN 13445
- Design available in accordance with AD 2000 data sheet, EN 13445
- Inspection certificate 3.1 – EN 10204 for the block flange
- Connection is TA-Air compliant – tested by an independent institute

### Also ideal as a connection for

- Sight glass
- Sight glass lights
- Pipelines
- Valves
- Immersion pipes
- Probes
- Measuring instruments (pressure, temperature, level, ...)

Technical data can be found in the product catalog.





“O-ring and mechanical stop prevent incorrect compression”

**Hygiene risk: undefined compression**

If the screws in a classic clamp connection are overtightened, the gasket will move inside the pipe. On the one hand, this reduces the cross-section at the affected point and creates turbulence, which impairs the flow. In addition, a flow shadow is created on the back of the gasket, which is difficult to clean. Depending on the product medium, its chemical properties or high temperature can also lead to expansion of the sealing material, further exacerbating the problem.

**The solution: O-ring and mechanical stop**

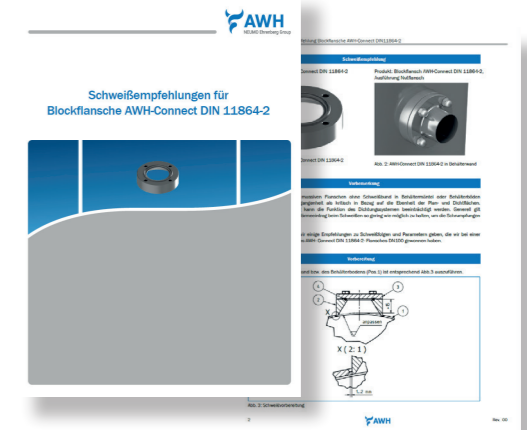
Unlike the clamp connection, with the AWH Connect 11864 connection a **mechanical stop** ensures that the seal ring is not overstressed in advance during assembly. This ensures that the **gasket fits perfectly and is compressed without dead space**.

The required gaskets correspond to the qualities and dimensions specified in DIN 11864-2.

Due to increased requirements when welding into a container, AWH has a **welding recommendation**.

The flanges can be welded into the side, base or top of the container.

After welding, the block flanges can be machined to adapt them to the container geometry.

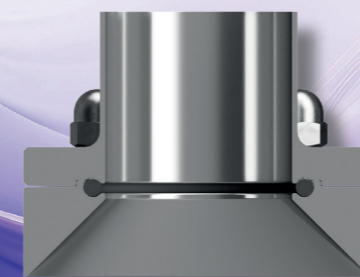
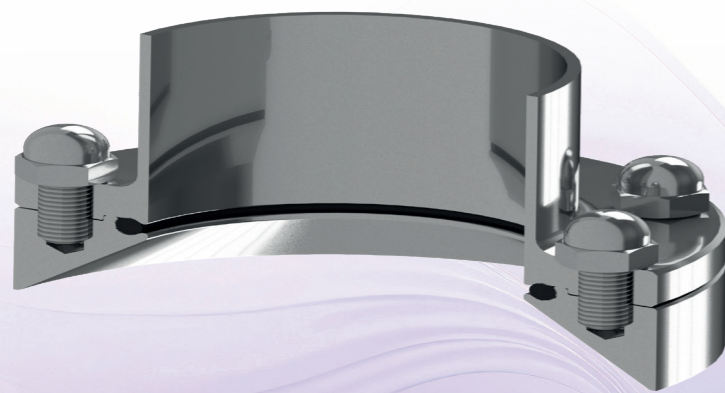


Bestätigung über die Verwendung von AWH Connect 11864-2 (Blockflansch) im Geltungsbereich der Druckgeräterichtlinie (DGR) 2014/68/EU			
Druckbehälter (AWH Connect 11864-2) Druckflansche nach der Norm EN 11864-2 (AWH Connect 11864-2)			
<b>Hersteller der AWH-Connect 11864-2 (Blockflansch)</b>	<b>Hersteller Name:</b>	<b>Auftragsgenauer/Druckbehälter-Druckflansch:</b>	<b>Druckbehälter-Druckflansch:</b>
AWH Connect 11864-2	AWH Connect 11864-2	AWH Connect 11864-2	AWH Connect 11864-2
<b>Material:</b>	<b>Material:</b>	<b>Material:</b>	<b>Material:</b>
316L	316L	316L	316L
<b>Werkstoffklasse und Festigkeitsklasse:</b>	<b>Werkstoffklasse und Festigkeitsklasse:</b>	<b>Werkstoffklasse und Festigkeitsklasse:</b>	<b>Werkstoffklasse und Festigkeitsklasse:</b>
EN 10222-2, EN 10222-3	EN 10222-2, EN 10222-3	EN 10222-2, EN 10222-3	EN 10222-2, EN 10222-3
<b>Druck:</b>	<b>Druck:</b>	<b>Druck:</b>	<b>Druck:</b>
10 bar	10 bar	10 bar	10 bar
<b>Temperaturbereich:</b>	<b>Temperaturbereich:</b>	<b>Temperaturbereich:</b>	<b>Temperaturbereich:</b>
-10°C bis 150°C	-10°C bis 150°C	-10°C bis 150°C	-10°C bis 150°C
<b>Anwendungsbereich:</b>	<b>Anwendungsbereich:</b>	<b>Anwendungsbereich:</b>	<b>Anwendungsbereich:</b>
Druckbehälter	Druckbehälter	Druckbehälter	Druckbehälter
<b>Druckbehältertyp:</b>	<b>Druckbehältertyp:</b>	<b>Druckbehältertyp:</b>	<b>Druckbehältertyp:</b>
AWH Connect 11864-2	AWH Connect 11864-2	AWH Connect 11864-2	AWH Connect 11864-2
<b>Druckbehältergröße:</b>	<b>Druckbehältergröße:</b>	<b>Druckbehältergröße:</b>	<b>Druckbehältergröße:</b>
DN 100 bis DN 150	DN 100 bis DN 150	DN 100 bis DN 150	DN 100 bis DN 150
<b>Druckbehältermaterial:</b>	<b>Druckbehältermaterial:</b>	<b>Druckbehältermaterial:</b>	<b>Druckbehältermaterial:</b>
316L	316L	316L	316L
<b>Druckbehälterklasse:</b>	<b>Druckbehälterklasse:</b>	<b>Druckbehälterklasse:</b>	<b>Druckbehälterklasse:</b>
Gruppe 1 und 2	Gruppe 1 und 2	Gruppe 1 und 2	Gruppe 1 und 2
<b>Druckbehälterart:</b>	<b>Druckbehälterart:</b>	<b>Druckbehälterart:</b>	<b>Druckbehälterart:</b>
AWH Connect 11864-2	AWH Connect 11864-2	AWH Connect 11864-2	AWH Connect 11864-2
<b>Druckbehälterhersteller:</b>	<b>Druckbehälterhersteller:</b>	<b>Druckbehälterhersteller:</b>	<b>Druckbehälterhersteller:</b>
AWH Connect 11864-2	AWH Connect 11864-2	AWH Connect 11864-2	AWH Connect 11864-2

Parts in contact with the product are made of material 316L (1.4435).

The AWH Connect block flange 11864-2 is approved in accordance with the Pressure Equipment Directive 2014/68/EU, following the EN13445 regulations and the national AD 2000 regulations.

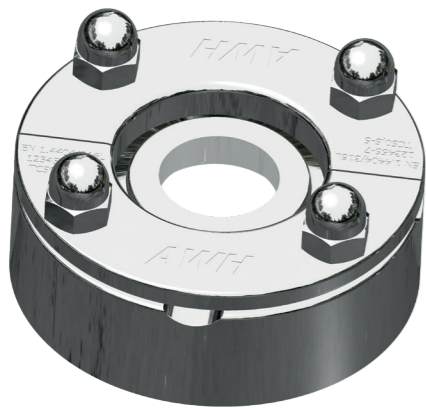
Our range has **three different construction heights** in various surface classes for a wide range of requirements. The **flanges can also be manufactured in special materials**, such as 904L (1.4539).



## “AWH-Connect – DIN 32676 A Clean Solution”

### The hygienic AWH Connect DIN 32676 connection for containers

AWH-Connect is the aseptic and hygienic connection for your containers. It was developed for the strict requirements of the pharmaceutical and biotechnological industry as well as those of the food industry. Using AWH-Connect will enable you to eliminate or minimize dead space in tanks. AWH-Connect combines the standard seal of a clamp connection as defined by standards such as DIN 32676 or ASME-BPE with the advantages of a block flange, which is welded into the wall of the tank. This allows you to connect a component to a container flush to the wall, close to the product and, above all, without any dead space.



AWH-Connect with sight glass

### Good reasons

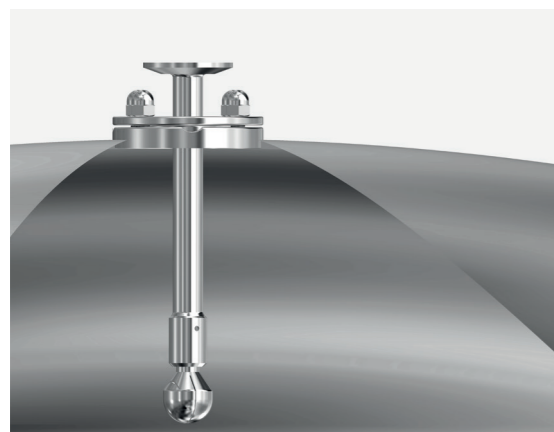
- Simple, reliable CIP/SIP of containers
- Improved operator safety
- 100% traceability
- Complies with ASME-BPE requirements
- Draft approved as per PED 2014/68/EU by TÜV Nord in accordance with AD 2000 data sheet and EN 13445
- Design available in accordance with AD 2000 data sheet, EN 13445
- Inspection certificate 3.1 – EN 10204 for the block flange

### Connection versions

- Ideal for the insertion of spray heads or surge cleaners, such as the AWH TANKO® S, via the downpipe
- Connect sampling valves or single-use systems with no dead space
- Sight glasses, filters, valves, immersion pipes, pH probes, measuring instruments (pressure, temperature, filling level, ...)

Please note: Not all sampling valves and systems are compatible with block flange connections. Please speak to the manufacturer of your choice or send us a 3D file so that we can perform a compatibility check for you.

Technical data can be found in the product catalog.



AWH-Connect as a connection for cleaning equipment



P22 pressure dome lid



P31 sterile, non-pressurized dome lid with double clip



P11 manhole lid with conical frame

## “AWH-Lid – A Tailor-Made Entrance”

Stainless steel tank covers are tried-and-tested locking components in the production of silo, process, sterile and pressure vessels. Their main areas of use include the food and beverage industry and the pharmaceutical industry.

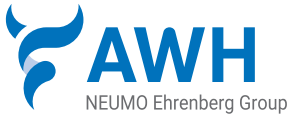
These tank lids differ from conventional flange connections, as their design enables rapid opening and closing. Robust hinges are used in place of the established clamping elements and always center the cover when closed.

The pressureless tank covers are supplemented by the pressure dome covers, which, in turn, are divided into different pressure levels. The pressure levels are dependent on the operating pressure, the temperature and other loads (e.g. an agitator). The sections that come into contact with media are made from the material 1.4404 (316L). In addition to the standard surfaces, we can also offer a wide range of qualities for internal and external surfaces.



P23 manhole lid with external door and clip





Armaturenwerk Hötensleben GmbH  
 Schulstr. 5-6  
 D-39393 Hötensleben

Tel: +49 39405 92-0  
 Fax: +49 39405 92-111  
 E-Mail: info@awh.eu  
 http://www.awh.eu

## NEUMO Ehrenberg Group

