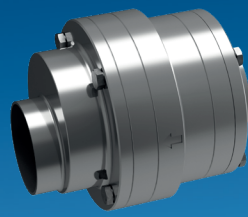


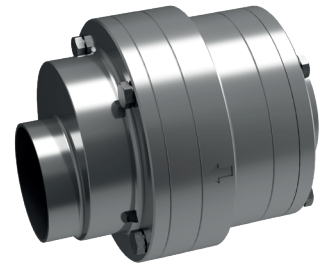
Eccentric hygienic non-return valves in intermediate flange design



General

The main task of such a valve is to safely prevent liquid backflow. The hygienic AWH non-return valve was developed specifically for processes with increased product and process requirements. The valve is designed with optimized flow and low dead space.

The variant with eccentric outlet is particularly suitable for horizontal installation. This design ensures that the housing runs empty in the direction of flow. It thus has excellent properties in terms of cleaning and hygienic operational reliability. The valve disc inside has neither groove nor seal. Sealing is achieved by means of an O-ring mounted in the housing, which meets the highest hygienic requirements. A mechanical stop inside the valve has been dispensed with in order to ensure the best possible position of the disc to the seal at all times.



All O-ring grooves in the housing essentially follow the requirements of DIN 11864 Hygiene Standard for flange connections. The valve thus offers the greatest possible safety against contamination and germs in the area of the seals. No pipe components need to be removed from the system to replace the seals.

After removing the fastening screws, the housing can be pulled out of the piping system.

Two seal qualities, EPDM and FKM, are available for use. The housing is made of stainless steel 1.4404 / 316L. The surface quality is product-contact $Ra \leq 0.8 \mu m$. The pipe connection dimensions follow DIN 11866 and EN 10357 series A. The inch version complies with EN 10357 series C and the Imperial Standard OD.

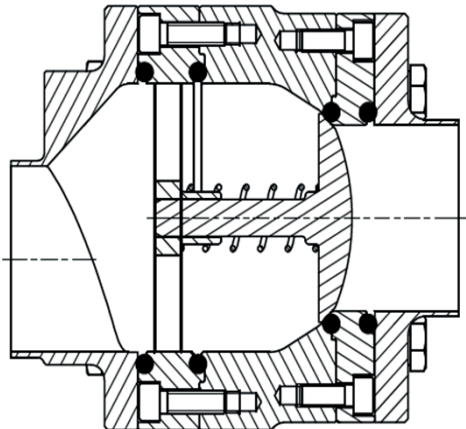
Technical data and ordering information

Intermediate Flange non-Return Valve DIN

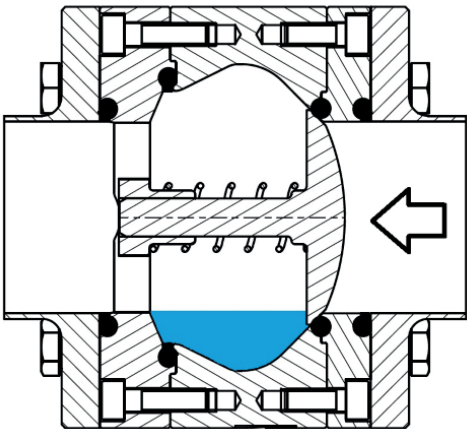
DN DIN	D1 [mm]	D4 [mm]	H [mm]	Weight [kg]	EPDM	FKM
					Article number	Article number
25	26	87	110,50	3,16	421405002/1	421405002/2
40	38	103	126	4,23	421407002/1	421407002/2
50	50	114	134	5,30	421408002/1	421408002/2
65	66	144	166	8,30	421409002/1	421409002/2
80	81	169	186	12,33	421410002/1	421410002/2
100	100	199	200	16,42	421412002/1	421412002/2

Intermediate Flange non-Return Valve inch

Zoll OD	D1 [mm]	D4 [mm]	H [mm]	Weight [kg]	EPDM	FKM
					Article number	Article number
1"	22,2	87	115	3,16	421454002/1	421454002/2
1 1/2"	34,8	103	126	4,32	421457002/1	421457002/2
2"	47,6	114	137	5,39	421458002/1	421458002/2
2 1/2"	60,3	144	166	8,52	421459002/1	421459002/2
3"	72,1	169	196	13,30	421460002/1	421460002/2
4"	97,4	199	201	16,63	421462002/1	421462002/2



Eccentric non-return valve
Mounting position horizontal without sump



Concentric non-return valve
Mounting position horizontal with sump



Armaturenwerk Hötensleben GmbH
 Schulstr. 5-6
 D-39393 Hötensleben

Tel: +49 39405 92-0
 Fax: +49 39405 92-111
 E-Mail: info@awh.eu
 http://www.awh.eu

NEUMO Ehrenberg Group

