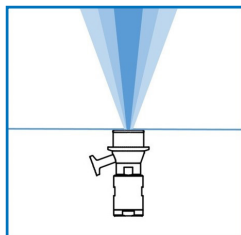


TANKO® GC



The compact TANKO GC spray cleaner is designed for the targeted cleaning of the insides of tanks and their internal components.

The key design feature of the TANKO GC is its flush mounting to the inside of the vessel, making it completely unobtrusive during the production process with no risk of collision with agitators, mixers or scraper blades. It also allows for a variety of mounting positions which would not be possible with conventional cleaning devices.

The TANKO GC spray cleaners are suitable for use as a stand-alone device but are more commonly used in conjunction with more conventional existing cleaning devices targeting difficult to reach shadow areas such as the underside of agitator blades etc.

Durable bellows made of either modif. PTFE or modif. UHMW-PE are used. UHMW-PE is the "PFAS-FREE" alternative solution.

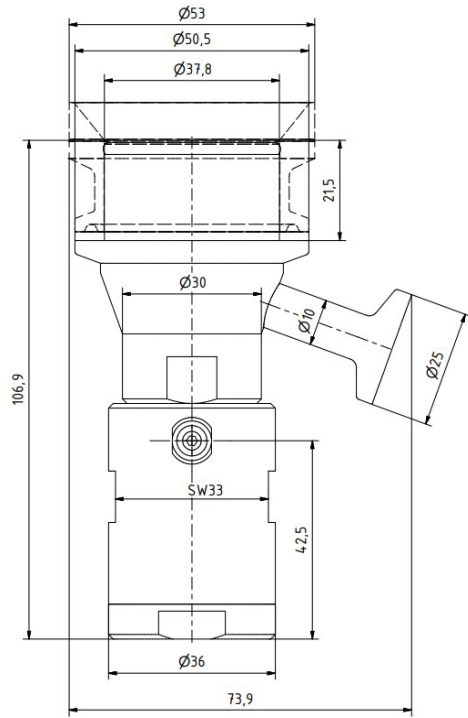
All consumption specifications are for guidance purposes.
The dimensions listed are in mm and are nominal dimensions.

Technical Parameters

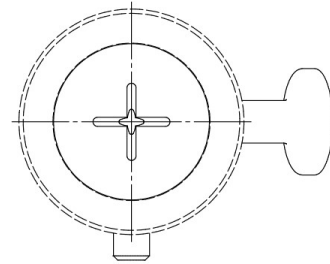
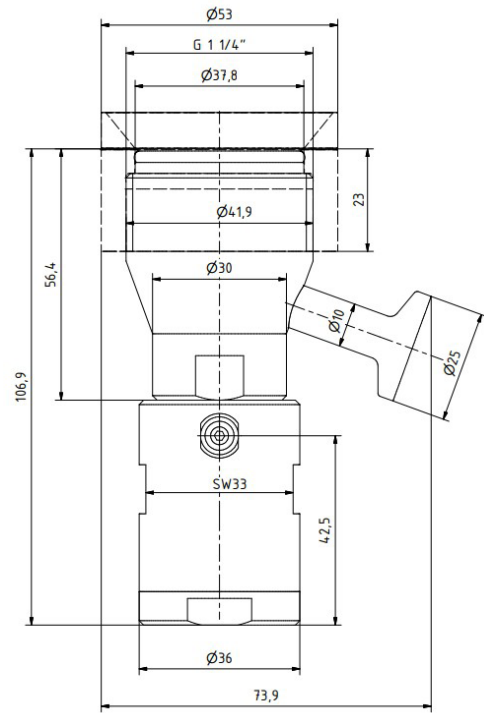
Spray angle:	40°
Materials:	1.4404, 1.4571 (spring), modif. UHMW-PE (PFAS FREE) / modif. PTFE, EPDM (optional FKM und FFKM)
Connections:	Medium connection: Clamp acc. DIN 32676 DN8/10 Reihe A; thread BSP 3/8" Process connection: Clamp DN40; thread BSP 1 1/4" Pneumatic connection: screw-in connection M5, AD4 (5/32")
Operating pressure:	Cleaning medium: 2 - 5 bar / 29 - 72.5 psi
Working temperature:	Cleaning medium: max. 95 °C / 203 °F
Ambient temperature:	PTFE: +5 - 150 °C / 41 - 302 °F UHMW-PE: +5 - 110 °C / 41 - 230 °F
Pressure in the container:	During the process, no cleaning and device closed: 0 - 5 bar / 0 - 72.5 psi During cleaning 0 - 0,5 bar / 0 - 7 psi
Volume flow rate:	0,6-1,1m³/h / 10,3-18,3l/min / 2,7-4,8gpm (US)
Range:	0,5 -2,2m at 0,5-4,0bar / 1,64-7,2ft
Weight:	ca. 1 kg

Dimensions

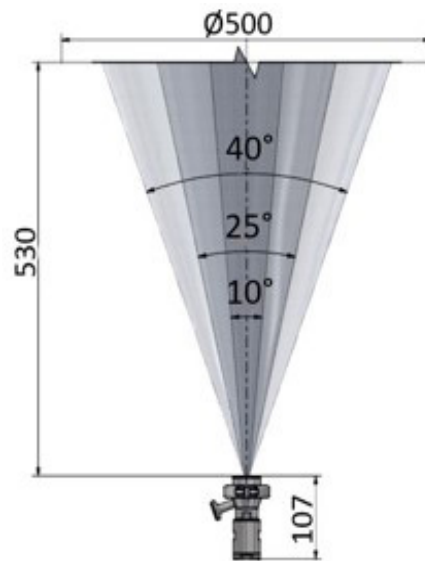
Clamp



Thread

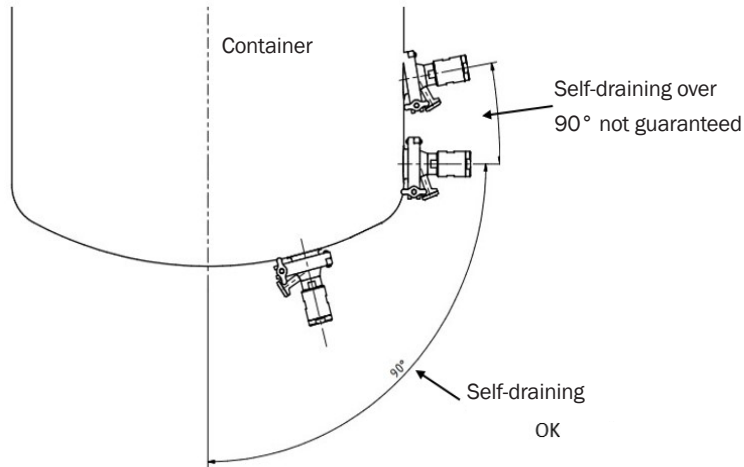


Spray pattern

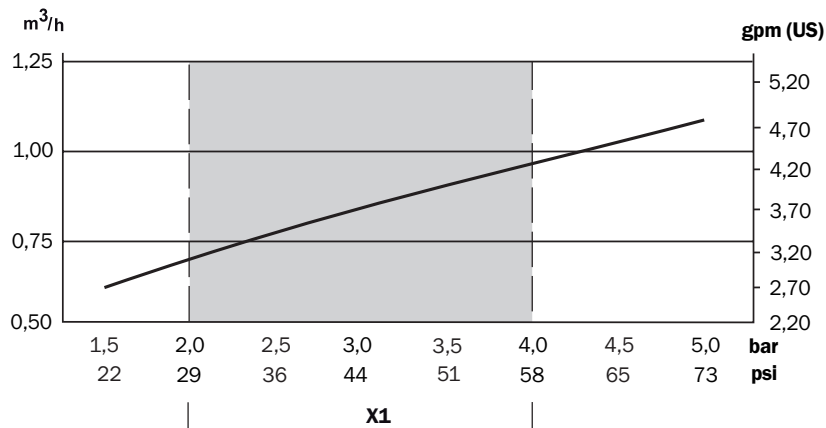


Installation advice regarding self-draining

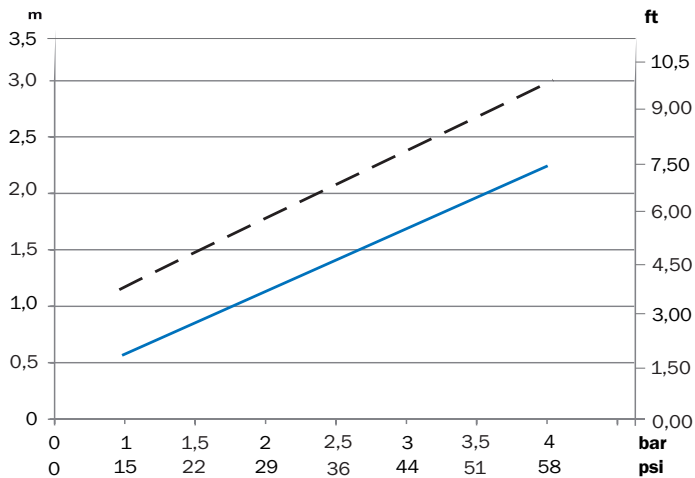
vertical (other installation positions possible)



Consumption and throw length data



X1 - recommend operating pressure



— Cleaning - - - Wetting

TANKO® GC

Ordering Information

TANKO® GC

Article no.	Process connection [PA]	Medium connection [MA]	Description	Bellow	Sealing material	Price/EUR
66 G40 39002 20	Clamp	Clamp	TANKO-GC40 CC FB PTFE E	mod. PTFE	EPDM on request FFKM; FKM	650,00
66 G40 39012 20	Thread	Clamp	TANKO-GC40 GC FB PTFE E	mod. PTFE		650,00
66 G40 39001 20	Clamp	Clamp	TANKO-GC40 CC FB Endu E	modi. UHMW-PE		865,00
66 G40 39011 20	Thread	Clamp	TANKO-GC40 GC FB Endu E	modi. UHMW-PE		865,00
66 G40 51102 20	Clamp	Thread	TANKO-GC40 CG FB PTFE E	mod. PTFE		650,00
66 G40 51112 20	Thread	Thread	TANKO-GC40 GG FB PTFE E	mod. PTFE		650,00
66 G40 51101 20	Clamp	Thread	TANKO-GC40 CG FB Endu E	modi. UHMW-PE		865,00
66 G40 51111 20	Thread	Thread	TANKO-GC40 GG FB Endu E	modi. UHMW-PE		865,00

One welding adaptor is included in the scope of supply per device.

Spare Parts and Services

Spare Parts

Article no.	Description	Price/EUR
66 G40 000V2 20	Spare part kit PTFE	97,00
66 G40 000V1 20	spare part kit UHMW-PE	305,00
66 RF0 400AC 020	Welding adapter for TANKO® RF40 Clamp	48,00
66 RF0 400AG 020	Welding adapter for TANKO® RF40 Thread	48,00

Blind Plugs Clamp/Thread

Article no.	Description	Price/EUR
66 RF0 400BC 020	Blind plugs for welding adapter PC Clamp TANKO® GC40	71,00
66 RF0 400BG 020	Blind plugs for welding adapter PC thread TANKO® GC40	75,00
1051 9000 012 30	Blind clamp cap Ø25 for MC Clamp TANKO® GC40	10,40
417 051 142	Cap G 3/8" MC thread for TANKO® GC40	16,00

PC- Process connection MC- Media connection

Material Certificates

Description	Price/EUR
WAZ 3.1 with FDA&USP Class VI TANKO® GC	45,00